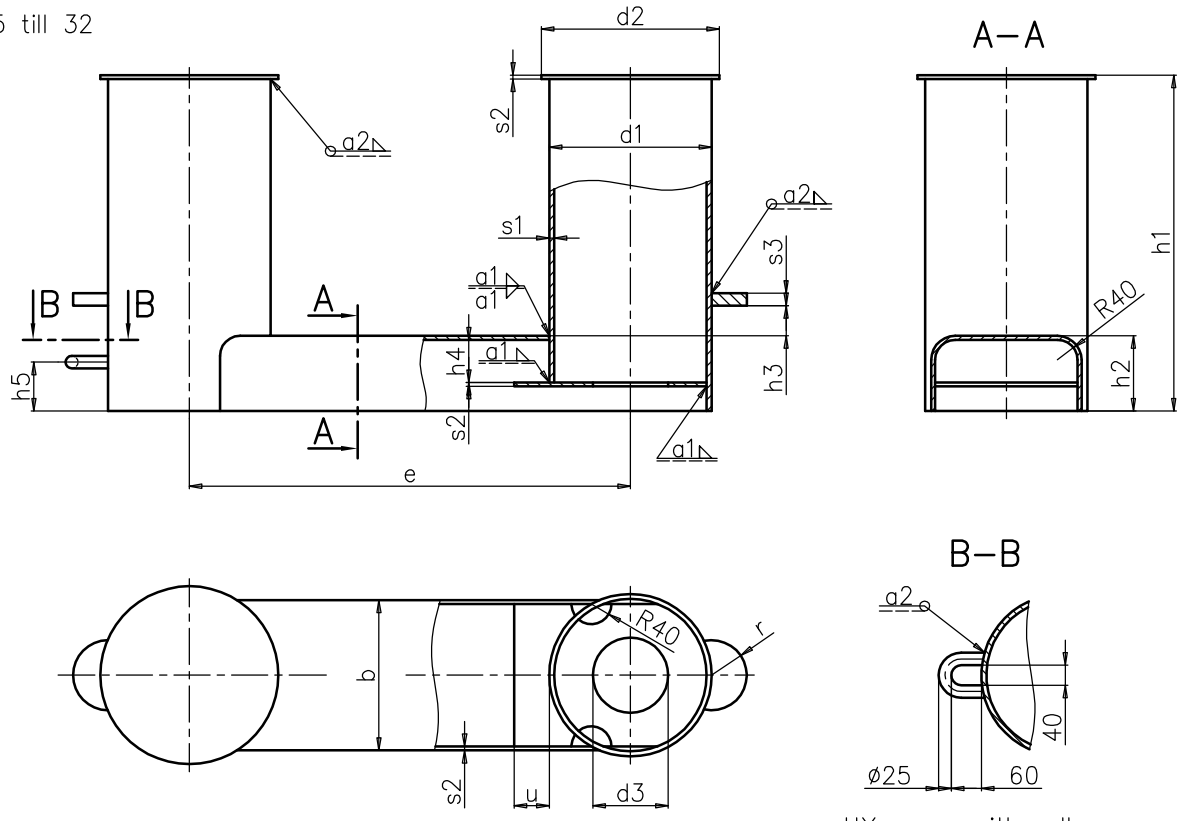
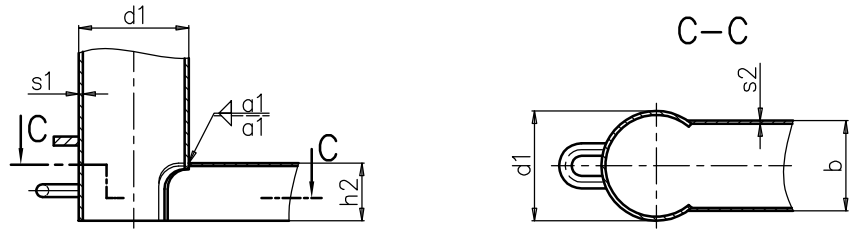


double bollards
NG 5 till 32

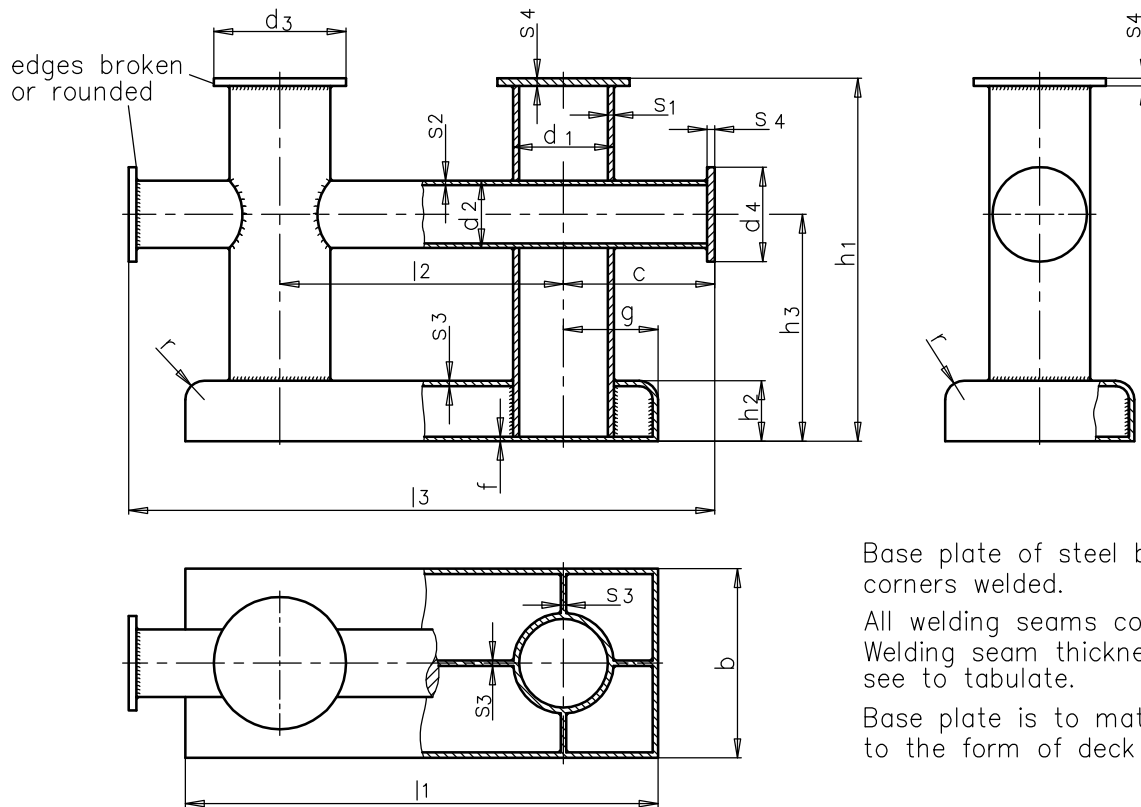


NG 1 till 3
all other measurements and details of NG 5 till 32



rated size NG	for cable tension of KN	pipe d1 x s1	b	d2	d3	e ± 10	h1	h2	h3	h4	h5	r	s2	s3	u	a1	a2	weight kg/piece ~
1	10	139,7 x 6,3	130	160	-	430	370	105	25	-	55	40	5	18	-	3,5	4	25
2	20	219,1 x 8	180	240	-	570	475	115	35	-	60	50	6	18	-	3,5	4	55
3	32	273 x 10	250	300	-	700	570	135	45	-	75	60	8	25	-	4	4	93
5	50	323,9 x 10	300	355	150	880	670	150	60	85	85	70	8	25	70	4	4	155
8	80	355,6 x 14,2	330	390	170	1050	780	175	75	105	105	80	10	25	80	5	4	265
12	120	457 x 16	420	490	210	1200	860	195	90	130	120	90	16	35	90	6	4	492
20	200	508 x 17,5	470	545	235	1350	970	230	115	155	150	100	16	35	100	7	4	650
32	320	559 x 20	530	600	255	1400	1000	270	145	155	180	110	16	35	110	7	4	740

H. A. Schröder GmbH & Co. KG Schiffdorf-Wehden						M. ./.	
				2003	Datum	Name	double bollards DIN 82607 POL 43/A4/01E
				Bearb	07.10.	Schi	
				Gepr			
				Norm			
Zust	Änderung	Datum	Nam				



Base plate of steel bent and corners welded.

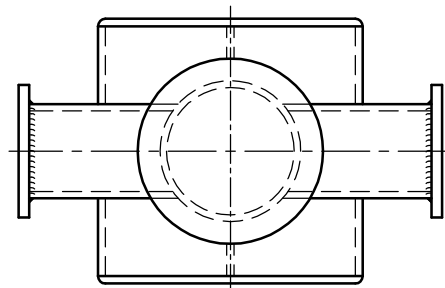
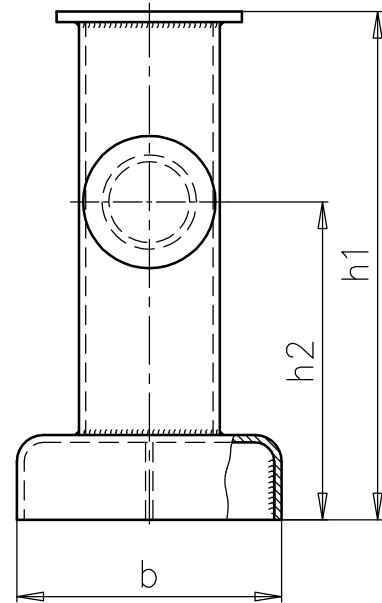
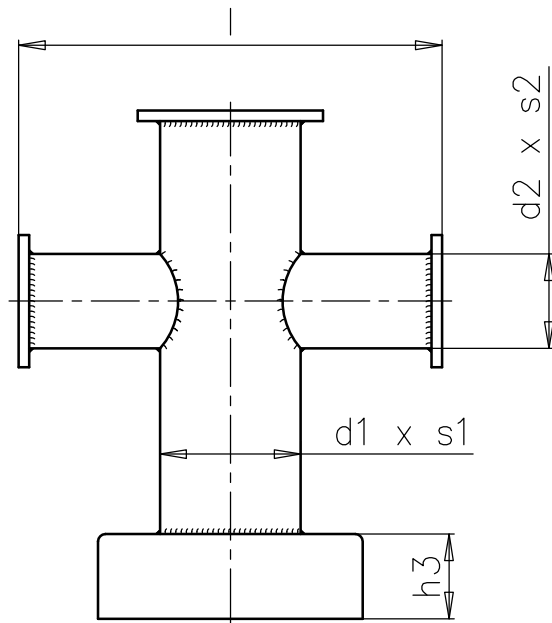
All welding seams continuously. Welding seam thickness (a) see to tabulate.

Base plate is to matched to the form of deck

rated size	f. cable tension of t	a	b	c	pipe		d ₃	d ₄	f	g	h ₁	h ₂
					d ₁ x _{s1}	d ₂ x _{s2}						
0,25	0,25	4	160	120	76,1 x 5,5	57 x 5	110	85	5	80	320	55
0,6	0,63	4	200	155	108 x 7	76,1 x 5,5	145	110	5	100	380	70
1	1,00	5	250	200	133 x 8	88,9 x 6	175	125	6	125	480	80
2	2,00	5	300	245	159 x 10	108 x 7	205	145	6	150	580	100
3	3,15	6	360	300	193,7 x 12	133 x 8	240	175	8	180	710	115
5	5,00	7	480	375	267 x 14	193,7 x 12	325	240	8	240	850	135
8	8,00	8	600	440	323,9 x 16	219,1 x 14	390	275	10	300	1000	160

rated size	h ₃	l ₁	l ₂	l ₃	r	s ₃	s ₄	weight (7.85 kg/dm ³) kg ~	maximum rope diameter app.	
									hemp r.	wire r.
0,25	200	400	240	480	15	5	8	17	18	-
0,6	240	500	300	610	20	6	8	35	28	10
1	300	625	375	775	25	7	10	59	36	12
2	360	780	480	970	30	8	10	103	52	16
3	430	960	600	1200	35	9	12	175	72	20
5	520	1230	750	1500	40	10	12	361	88	26
8	610	1560	960	1840	50	12	12	596	120	32

H. A. Schröder GmbH & Co. KG Schiffdorf-Wehden						M. ./.	
				2003 Datum		Name	
Bearb 28.10.		Stü					
Gepr							
Norm							
				POL 10/A4/01E			
Zust	Änderung	Datum	Nam				



size	pipe		l	b	h ₁	h ₂	h ₃
	d1xs1	d2xs2					
1	114,3 x 5	57 x 5	230	200	280	198	100
2	139,7 x 6,3	63,5 x 6,3	284	220	320	222	105
3	168,3 x 7.1	76,1 x 8	304	300	370	255	115
5	244,5 x 8	114,3 x 8,8	457	350	515	345	140
8	298,5 x 8,8	139,7 x 10	559	410	615	406	155
12	323,8 x 10	152,4 x 11	610	440	655	438	165
16	355,6 x 11	168,3 x 12,5	670	570	720	475	175
20	406,4 x 12,5	193,7 x 14,2	775	640	820	534	190
32	457,2 x 14,2	219,1 x 16	876	710	925	593	205

H. A. Schröder

GmbH & Co. KG
Schiffdorf-Wehden

M. ./.

2003	Datum	Name
Bearb	31.10.	Schi
Gepr		
Norm		

single cross bollard
overall view

POL 44/A4/01E

Zust	Änderung	Datum	Nam
------	----------	-------	-----