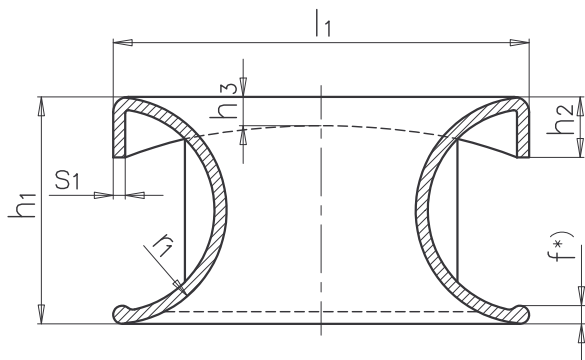
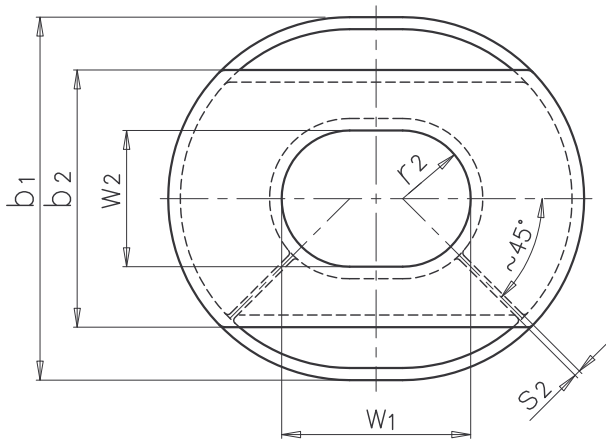
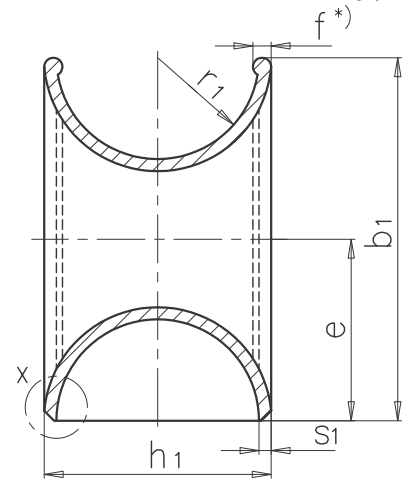
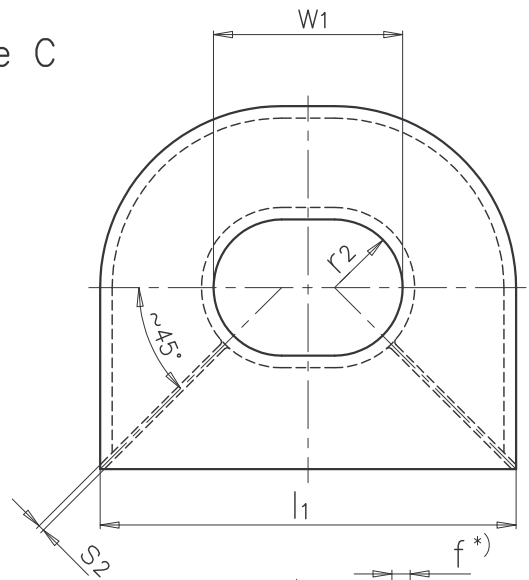


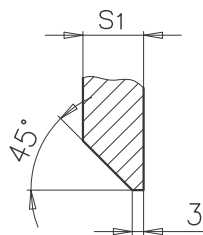
type A



type C



detail X



\*) design of size 32 surrounding bulb

rated size	for cable tension kN	b <sub>1</sub>	b <sub>2</sub>	e	f ~	h <sub>1</sub>	h <sub>2</sub>	h <sub>3</sub>	l <sub>1</sub>	r <sub>1</sub>	r <sub>2</sub>	S <sub>1</sub>	S <sub>2</sub>	W <sub>1</sub>	W <sub>2</sub>	weight (kg)			
																type A		type C	
																GGG	GS	GGG	GS
1	10	250	175	125	15	160	65	20	285	80	45	10	5	125	90	16,5	18	18	19,5
2	20	315	225	157,5	18	200	70	25	360	100	57,5	12	6	160	115	24	26	27	29
3	30	390	275	195	21	250	75	32	450	125	70	14	7	200	140	39	42	44	48
5	50	480	340	240	24	300	80	38	550	150	90	16	8	250	180	69	74	78	85
8	80	585	415	292,5	27	360	90	45	680	180	112,5	18	9	320	225	112	120	127	136
12	120	710	500	355	30	440	110	55	840	220	135	20	10	400	270	175	185	199	211
20	200	840	595	420	33	520	130	65	1020	260	160	22	11	500	320	265	285	302	325
32	320	1100	800	550	-	700	150	80	1300	350	200	35	20	600	400	730	795	770	840

1) rated size 8 conforms with the simple Panama chock

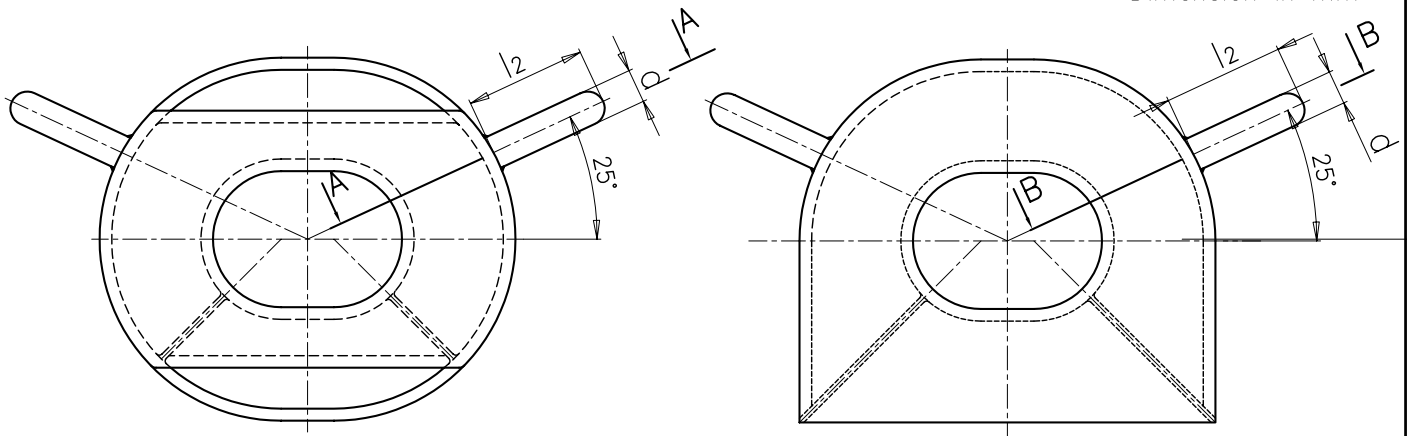
2) rated size 12 till 32 conforms with the double type Panama chock with the PCC-regulation for minimum dimensions; however, the size 20 and 32 do considerably exceed the minimum dimensions

<b>H. A. Schröder</b> GmbH & Co. KG Schiffdorf-Wehden						M. ./.	
				2003	Datum	Name	multi-purpose chock DIN 81 915 type A and C  MKL 24/A4/01E
				Bearb	18.09.	Stü	
				Gepr			
				Norm			
Zust	Änderung	Datum	Nam				

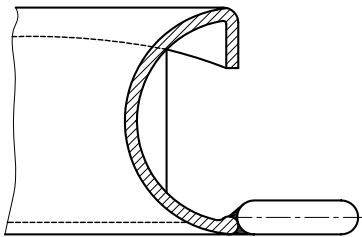
type B

type D

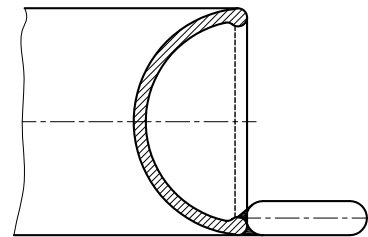
Dimension in mm



A - A  
turned at 25°



B - B  
turned at 25°



rated size	d	l <sub>2</sub>	weight 2 horns kg	all other measurements of form B accord. to form A form D accord. to form C
1	30	115	1,5	
2	35	125	2	
3	40	140	3	
5	45	160	4	
8	50	180	6	

Description of a multi-purpose chock  
form B of rated size 5 of GS-38

Description of a free standing  
multi-purpose chock form D of rated size 5 of GGG-40

CHOCK DIN 81 915-B5-GS

CHOCK DIN 81 915-D5-GGG

4. material/ to be included in description

GGG = EN-GJS-400-15 (material-No.: EN-JS1030) acc. to DIN EN 1563

GS = GS-38 (material-No.: 1.0420) acc. to DIN 1681

For the horns form B and D use steel acc. DIN 1013-1

S 235 JRG 2 (material-no. 1.0038) acc. to DIN EN 10025.

5. preparation

5.1 preparation

all edges rounded off. The surface contacted by the ropes must be smooth and may not have any unevenness

5.2 heat treatment

chock of GS standart-type annealed

5.3 surface protection

delivery condition 3 F 02 acc. to DIN 80200 deviating preparations are to be agreed upon specially

H. A. Schröder

GmbH & Co. KG  
Schiffdorf-Wehden

M. 1 : 10

2003	Datum	Name
Bearb	19.09.	Stü
Gepr		
Norm		

MULTI-PURPOSE CHOCK  
DIN 81 915 type B and D

MKL 24/A4/02E

Zust	Änderung	Datum	Nam
------	----------	-------	-----